

Date of approval: November 2020

No.	Related Documents	Status *
1	Latest MAS Tide Table	Active
2	ISPS ship pre-arrival form (F-51/52.001)	Active
3	Maritime Declaration of Health form (F-51/52.021)	
4	Questions related to the novel Coronavirus (COVID-19) outbreak (F51/52.034)	Active
5	Questions related to the Ebola outbreak (F51/52.027)	Active
6	Shipping notice 2015/01 Minimum requirements for safe and efficient passage of sea-going vessels in Surinamese waters	Active
7	Shipping notice 2018/03 Nautical Accessibility Suriname River	Active
8	Chart no 2675 Suriname River from Entrance to Toevlucht and corresponding ENC's no. SR2218A and no.SR2218B	Active
9	Relevant NtM of the area on www.mas.sr	Active

Additional requirements for ships to navigate alongside General Dock

#### Length overall (LOA)

De General Dock can accommodate vessels with a maximum length of two hundred twenty meters (220m)

#### Depth at Berth:

The berthing area at the General Dock has a depth of 8.0 meters at Low Water Spring.

#### The calculated vessel draft at General Dock for vessels up to two hundred twenty meters (220m):

- Mooring and departing at starboard side and portside is; 8.0m- 0.50m (keel clearance) = 7.5m + tidal rise calculated at time of mooring.

#### Note

At General Dock from bolder 9 to bolder 12 the shallowest depth is 6.7 m. Calculated vessel draft for vessels using this area is 6.7m – 0.50m ( keel clearance) = 6.2m + tidal rise calculated at time of mooring.( Figure 2)

#### Tugboat assistance

At General Dock there is no requirement for tugboat assistance.

**Turning basin for vessels of more than 140m:**

Vessels of more than one hundred and forty meters (140m) in length must use the turning basin or anchorage area at Chatillion or Simonspolder (for turning) to be able to moor Port side at the Jetty.

**Bathymetric survey for monitoring the depth at General Dock.**

Due to the rapid sedimentation rate periodic maintenance is required. The Maritime Authority Suriname will issue the depth at General Dock on yearly basis after each bathymetric survey. The latest depth survey at General Dock dated July 2020 (Figure 1).

**Note:**

- **In special or exceptional cases, the MAS is fully authorized to request tugboat assistance for partial or the entire distance to be navigated within the channel.**
- **Vessels with bow thrusters which are not in good working condition are regarded as vessels without bow thrusters.**
- **A mooring boat must be on standby to assist with the mooring lines.**
- **For tugboat assistance tugboat operators/companies should possess a valid license for tugboat operations issued by the Maritime Authority Suriname.**

Approved by the  
Maritime Authority Suriname,

**Mr. M. Amafo LL.M**  
**Director**

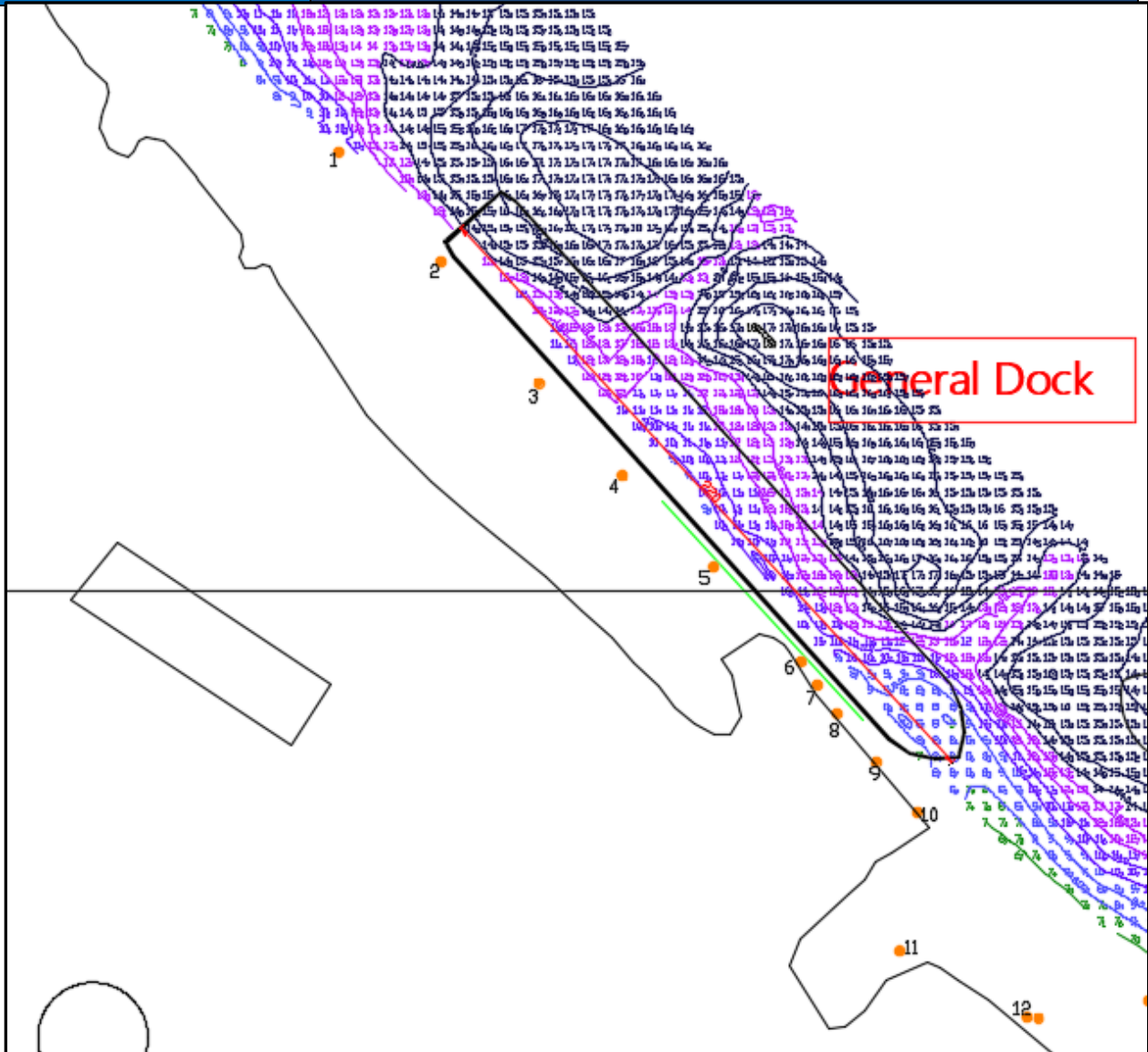


Figure 1: Depth survey General Dock July 2020 (depths are referred to LWS)

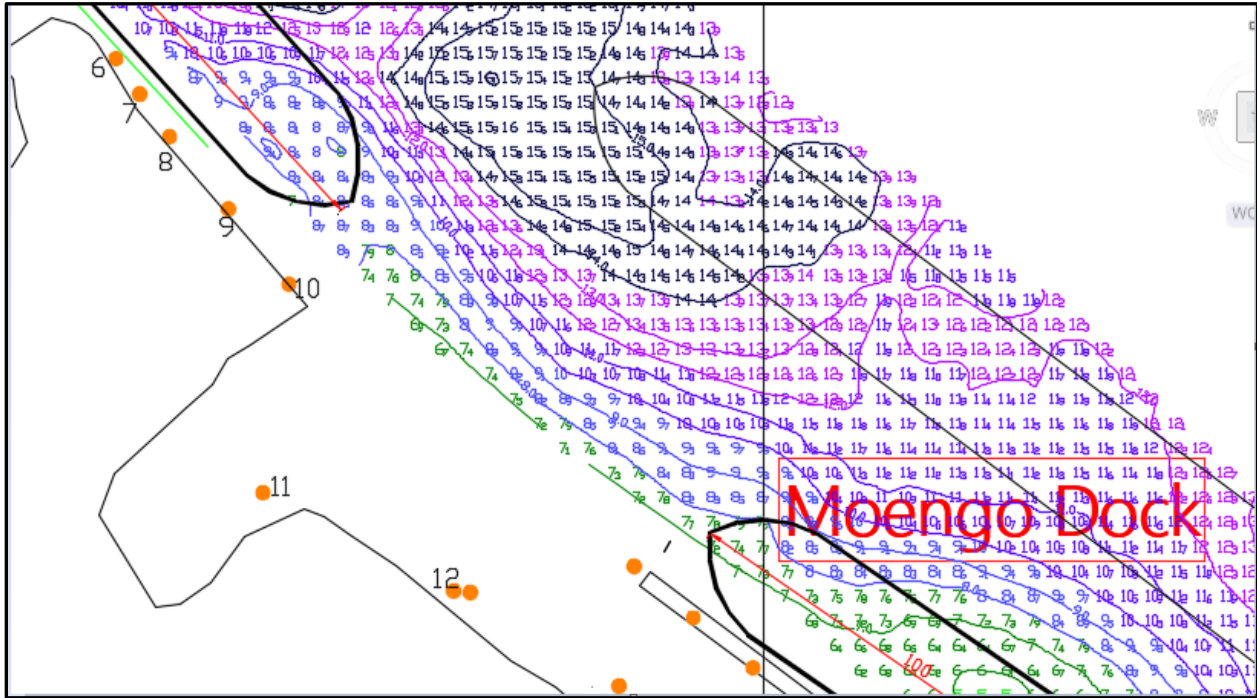


Figure 2: Shallowest depth from bolder 9 to bolder 12