

Shipping notice 2020/13 **NAUTICAL ACCESSIBILITY HAVEN VAN NIEUW NICKERIE-SRICK-0002**

Date of approval: October 2020

No.	Related Documents	Status *
1	Latest MAS Tide Table	Active
2	ISPS ship pre-arrival form (F-51/52.001)	Active
3	Maritime Declaration of Health form (F-51/52.021)	
4	Questions related to the novel Coronavirus (COVID-19) outbreak (F51/52.034)	Active
5	Questions related to the Ebola outbreak (F51/52.027)	Active
6	Shipping notice 2015/01 Minimum requirements for safe and efficient passage of sea-going vessels in Surinamese waters	Active
7	Shipping notice 2019/01 nautical Accessibility Nickerie River	Active
8	Chart no 2766 Corantijn and Nickerie River ENC no SR5D2766, Nickerie River - Nickerie Point to Waterloo	Active
9	Relevant NtM of the area on www.mas.sr	Active

Additional requirements for ships to navigate alongside Haven van Nieuw Nickerie

1. Length overall (LOA)

De Haven van Nieuw Nickerie jetty can accommodate vessels with a maximum length of **one hundred twenty meters (120m)**

2. Depth at Berth:

The berthing area at Haven van Nieuw Nickerie has a depth of 4.6 meters at Low Water Spring.

The calculated vessel draft at Haven van Nieuw Nickerie for vessels up to one hundred twenty meters (120m):

- Vessels mooring at starboard side is; $4.6m - 0.20m$ (keel clearance) = $4.4m +$ tidal rise calculated at time of mooring.
- Vessels mooring at portside is; $4.6m - 0.20m$ (keel clearance) = $4.4m +$ tidal rise calculated at time of mooring.
- Vessels departing from starboard side is; $4.6m - 0.20m$ (keel clearance) = $4.4m +$ tidal rise calculated at time of departure.
- Vessels departing from portside is; $4.6m - 0.20m$ (keel clearance) = $4.4m +$ tidal rise calculated at time of departure.



3. Tugboat assistance and bow thrusters

- Tugboat assistance is required for vessels with a LOA of more than 110metres and up to 120metres with a minimum of 1200 hp.
- Bow thrusters are compulsory for vessels with LOA of 115 meters and up to 120 meters.

Bathymetric survey for monitoring the depth at Haven van Nieuw Nickerie

Due to the rapid sedimentation rate periodic maintenance is required. The Maritime Authority Suriname will issue the depth at Haven van Nieuw Nickerie on yearly basis after each bathymetric survey. The latest depth survey at Haven van Nieuw Nickerie dated August 2020.

Note:

- **In special or exceptional cases, the MAS is fully authorized to request tugboat assistance for partial or the entire distance to be navigated within the channel**
- **Vessels with bow thrusters which are not in good working condition are regarded as vessels without bow thrusters**
- **A mooring boat must be on standby to assist with the mooring lines.**
- **The tugboats assisting the vessels should be fit for duty**
- **For tugboat assistance tugboat operators/companies should possess a valid license for tugboat operations issued by the Maritime Authority Suriname.**

Approved by the
Maritime Authority Suriname,



Mr. M. Amafo LL.M
Director

Shipping notice 2020/13 **NAUTICAL ACCESSIBILITY HAVEN VAN NIEUW NICKERIE-SRICK-0002**

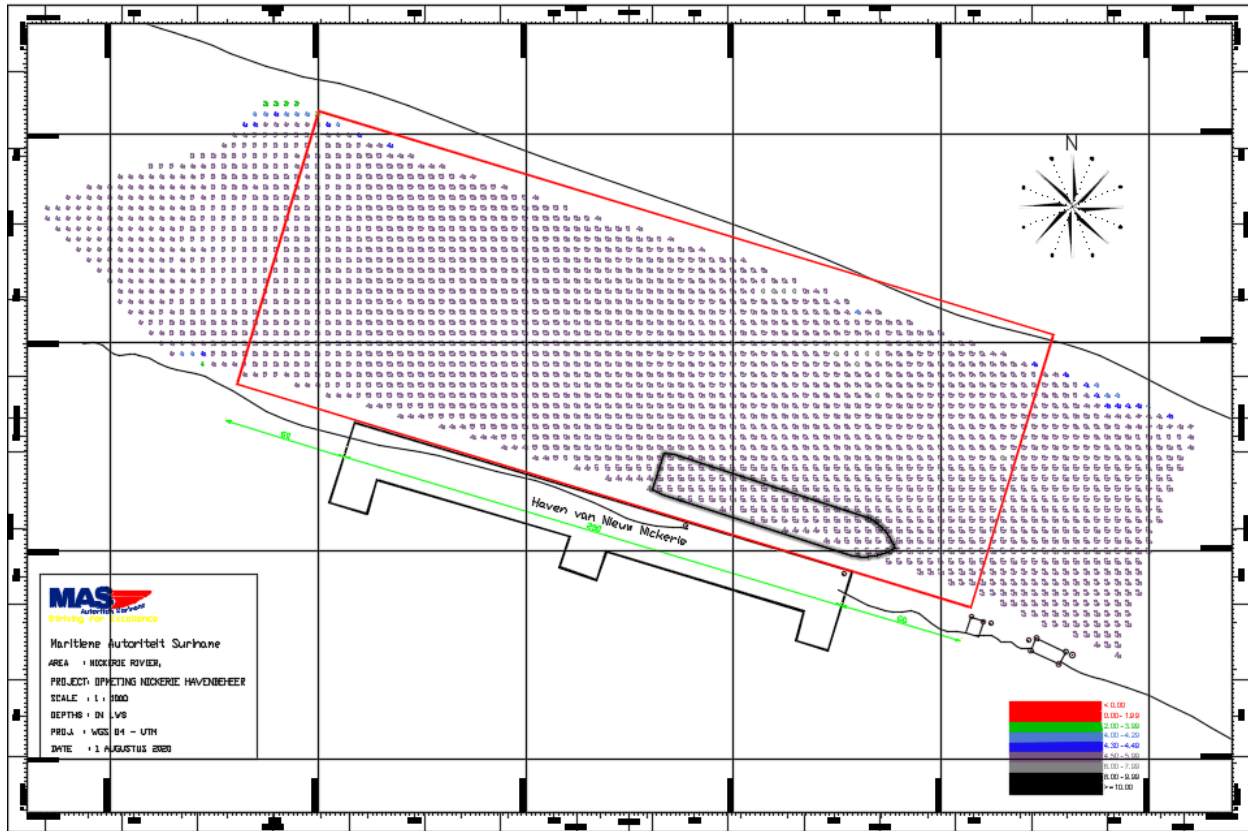


Figure 1: Depth survey Haven van Nieuw Nickerie August 2020 (depths are referred to LWS)